

MODEL **HT6F-820**

SERIAL NUMBER

135277

REFERENCE TO OCCUPATIONAL SAFETY AND HEALTH ADMINISTRATION RULES AND
REGULATIONS, 29 CFR, NO 209, PART 1926, SUBPART P

SHIELD SIZE

PSF RATING

MAXIMUM ALLOWABLE DEPTH OF CUT (FEET)
D

SOIL TYPE TO BE EXCAVATED

HEIGHT
(FEET)

LENGTH
(FEET)

MAXIMUM LATERAL
EARTH PRESSURE
CAPACITY AT TRENCH
BOTTOM IN POUNDS
PER SQUARE FOOT

TYPE B

MEDIUM COHESIVE TO
GRANULAR SOIL. 45 PSF
PER FOOT OF DEPTH.

TYPE C-60

SOFT COHESIVE TO
SUBMERGED SOIL. 60 PSF
PER FOOT OF DEPTH.

TYPE C-80

SOFT COHESIVE TO
SUBMERGED SOIL. 80 PSF
PER FOOT OF DEPTH.

8

20

1560

35

26

20

LIMITATIONS IN USE OF TABLE

DESCRIPTION

Clay, with Unconfined
Compressive Strength
Greater than .5 TSF But
Less than 1.5 TSF
Cohesionless Gravel,
Silt, Silty Loam or Sandy
Loam.

DESCRIPTION

Soft Cohesive Soil
Unconfined Compressive
Strength Less than .5
TSF Gravel, Sand and
Loamy Sand; Submerged
Soil or fractured Rock
that is not Stable.

DESCRIPTION

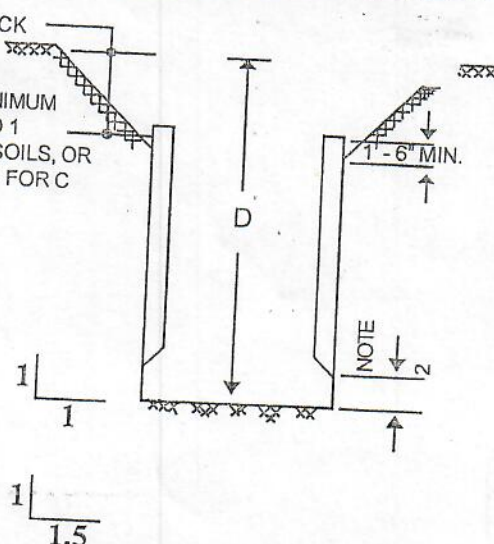
Soft Cohesive Soil
Unconfined Compressive
Strength Less than .5
TSF Gravel, Sand and
Loamy Sand; Submerged
Soil or fractured Rock
that is not Stable.

1. TRENCH SHIELD TO BE ASSEMBLED AND INSTALLED AS SHOWN AND IN ACCORDANCE WITH MANUFACTURER'S INSTRUCTIONS.
2. EXCAVATION 2 FEET BELOW BOTTOM OF SHIELD IS PERMITTED WHEN NO LOSS OF SOIL FROM BEHIND OR BELOW THE BOTTOM OF SHIELD IS ENCOUNTERED. SEE PARAGRAPH 1926.652 (e)(2)(i). THE COMPETENT PERSON SHALL MAKE THE DETERMINATION FOR COMPLIANCE. SUDDEN SHIFTING OF THE SHIELD VERTICALLY SHALL BE AVOIDED.
3. CONSULT MANUFACTURER WHEN RESTRICTION ON NOTE 2 IS NOT MET.
4. ADDITIONAL SHIELDS MAY BE STACKED WITH NO PENALTY IN DEPTH OF CUT AS LONG AS THE RATING OF THE BOTTOM SHIELD IS NOT EXCEEDED.
5. DEPTHS OF CUTS SHOWN ARE BASED ON EXAMPLES OF VARIOUS SOIL CONDITIONS. VERIFY ACTUAL SOIL PRESSURES PRIOR TO EACH USE.
6. ANY MODIFICATIONS OR ALTERATIONS NOT ALLOWED UNLESS APPROVED IN WRITING BY EFFICIENCY PRODUCTION, INC.
7. CONTRACTOR'S COMPETENT/QUALIFIED PERSON SHALL BE RESPONSIBLE FOR MONITORING SOIL CONDITIONS AND SHALL BE RESPONSIBLE FOR COMPLIANCE WITH ALL FEDERAL, STATE AND LOCAL RULES AND REGULATIONS.
8. SPREADER PINS SHALL BE AISI C-1018 60-75 KSI MIN. YIELD AND NO MORE THAN 1/4" SMALLER THAN COLLAR AND SPREADER PIN HOLES AS MANUFACTURED BY EFFICIENCY PRODUCTION, INC.

LAYBACK
AND
SLOPE
AT A MINIMUM
OF 1 TO 1
FOR B-SOILS, OR
1.5 TO 1 FOR C
SOILS

B-SOILS
(1 TO 1 SLOPE)

C-SOILS
(1.5 TO 1 SLOPE)



CONTINUED ON REVERSE SIDE



CERTIFIED BY:
EFFICIENCY PRODUCTION, INC.

COPYRIGHT:
1991 EFFICIENCY PRODUCTION, INC.
ALL RIGHTS RESERVED

MANUFACTURED UNDER ONE OR MORE OF THE FOLLOWING U.S. PATENT NUMBERS;
4,090,365-4,114,383-4,259,028
ONE OR MORE OF THE FOLLOWING CANADIAN PATENT NUMBERS: 1,062,683-1,062,684

USE THIS PRODUCT ONLY IN ACCORDANCE WITH APPLICABLE
FEDERAL, STATE, OR LOCAL LAWS

Any use of this product not specifically described on this certificate could cause cave-in, collapse, or structural failure resulting in death or serious injury.