

MODEL

814 MHXLD

SERIAL NUMBER

113714

REFERENCE TO OCCUPATIONAL SAFETY AND HEALTH ADMINISTRATION RULES AND
REGULATIONS. VOL. 54, NO. 209, 10-31-89, PART 1926, SUBPART P

SHIELD SIZE		PSF RATING	MAXIMUM ALLOWABLE DEPTH OF CUT (FEET) D		
			SOIL TYPE TO BE EXCAVATED		
HEIGHT (FEET)	LENGTH (FEET)	MAXIMUM LATERAL EARTH PRESSURE CAPACITY AT TRENCH BOTTOM IN POUNDS PER SQUARE FOOT	TYPE A Stiff, cohesive soil. 25 PSF per foot of depth.	TYPE B Medium cohesive to granular soil. 45 PSF per foot of depth.	TYPE C Soft cohesive to submerged soil. 60 PSF per foot of depth.
8	14	1,324	53	29	22

LIMITATIONS IN USE OF TABLE

- TRENCH SHIELD TO BE ASSEMBLED AND INSTALLED AS SHOWN AND IN ACCORDANCE WITH MANUFACTURER'S INSTRUCTIONS.
- EXCAVATION 2 FEET BELOW BOTTOM OF SHIELD IS PERMITTED WHEN NO LOSS OF SOIL FROM BEHIND OR BELOW THE BOTTOM OF SHIELD IS ENCOUNTERED.
- CONSULT MANUFACTURER WHEN RESTRICTION OF NOTE 2 IS NOT MET.
- ADDITIONAL SHIELDS MAY BE STACKED WITH NO PENALTY IN DEPTH OF CUT.
- DEPTHS OF CUTS SHOWN ARE BASED ON EXAMPLES OF VARIOUS SOIL CONDITIONS. VERIFY ACTUAL SOIL PRESSURES PRIOR TO EACH USE.
- ANY MODIFICATIONS OR ALTERATIONS NOT ALLOWED UNLESS APPROVED IN WRITING BY EFFICIENCY PRODUCTION, INC.
- DEPTH CERTIFICATION IS BASED ON SHORT TERM EXPOSURE WITH EXCAVATION OPEN A PERIOD OF TIME EQUAL TO 24 HOURS OR LESS. CONSULT THE MANUFACTURER SHOULD LONG TERM EXPOSURE BE REQUIRED.

DESCRIPTION

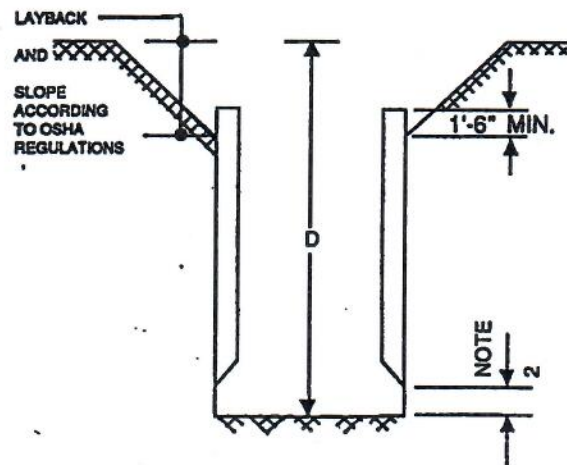
Clay, silty clay, sandy clay, clay loam, unconfined compressive strength of 1.5 tons per square foot or greater. (See note 8 on reverse side).

DESCRIPTION

Clay with unconfined compressive strength greater than .5 TSF but less than 1.5 TSF. cohesionless gravel, silt, silt loam or sandy loam. (See Note 9 on reverse side).

DESCRIPTION

Clay with unconfined compressive strength less than .5 TSF, submerged sand, clay or fractured rock that is not stable. (See Note 10 on reverse side).



CERTIFIED BY:

McCLURG & ASSOCIATES, INC. CONSULTING ENGINEERS

EFFICIENCY PRODUCTION, INC.
ALL RIGHTS RESERVED

MANUFACTURED UNDER ONE OR MORE OF THE FOLLOWING U.S. PATENT NUMBERS:
4,090,365-4,114,383-4,259,028
ONE OR MORE OF THE FOLLOWING CANADIAN PATENT NUMBERS: 1,062,683-1,062,684

**USE THIS PRODUCT ONLY IN ACCORDANCE WITH
APPLICABLE FEDERAL, STATE, OR LOCAL LAWS**



Any use of this product not specifically described on this certificate could cause cave-in, collapse, or structural failure resulting in death or serious injury.